

## **SKIP PIN vs. FAST LOGIN**

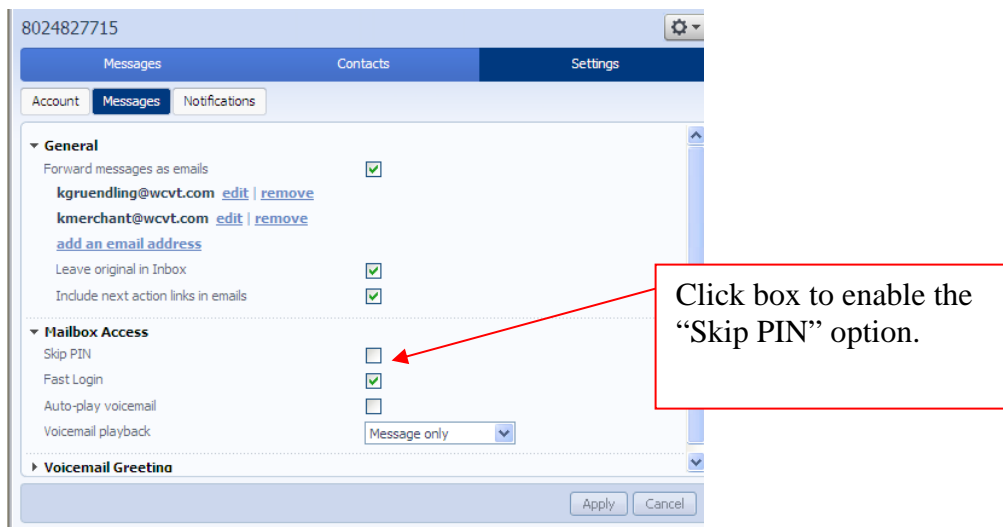
**Skip Pin** - If Skip PIN setting is enabled, you are not required to enter your PIN when accessing your mailbox from your own telephone number (the telephone number the voicemail is programmed on). This saves you time, but reduces security as anybody with access to your telephone can then access your mailbox

**Fast Login** - This setting is enabled by default. When Fast Login is enabled, when accessing your voice mail from the number the voice mail is programmed on, your phone number is automatically recognized and you only need to enter your PIN.

**Note:** *Fast Login is enabled by default (SKIP PIN is not).*

### **Enabling Skip Pin or Fast Log In via the Comportal ([www.voicemail.wcvt.com](http://www.voicemail.wcvt.com))**

- Log into the comportal
- Click on the “Settings” tab
- Click on the “Messages” tab
- Click on “Mailbox Access” link.
  - Check “Skip PIN”
  - Make sure “Fast Login” is checked (this feature is turned on by default in the system).



### **Enabling the Skip Pin or Fast Login options via the Telephone User Interface (TUI)**

- Dial into the Voice Mail system
  - Press “4” to access the “Change Settings” menu
  - Press “3” to access the “Security options” menu
  - Press “2” – to “Change Fast Login” feature
- Or**
- Press “3” – to “Change Skip Pin” feature